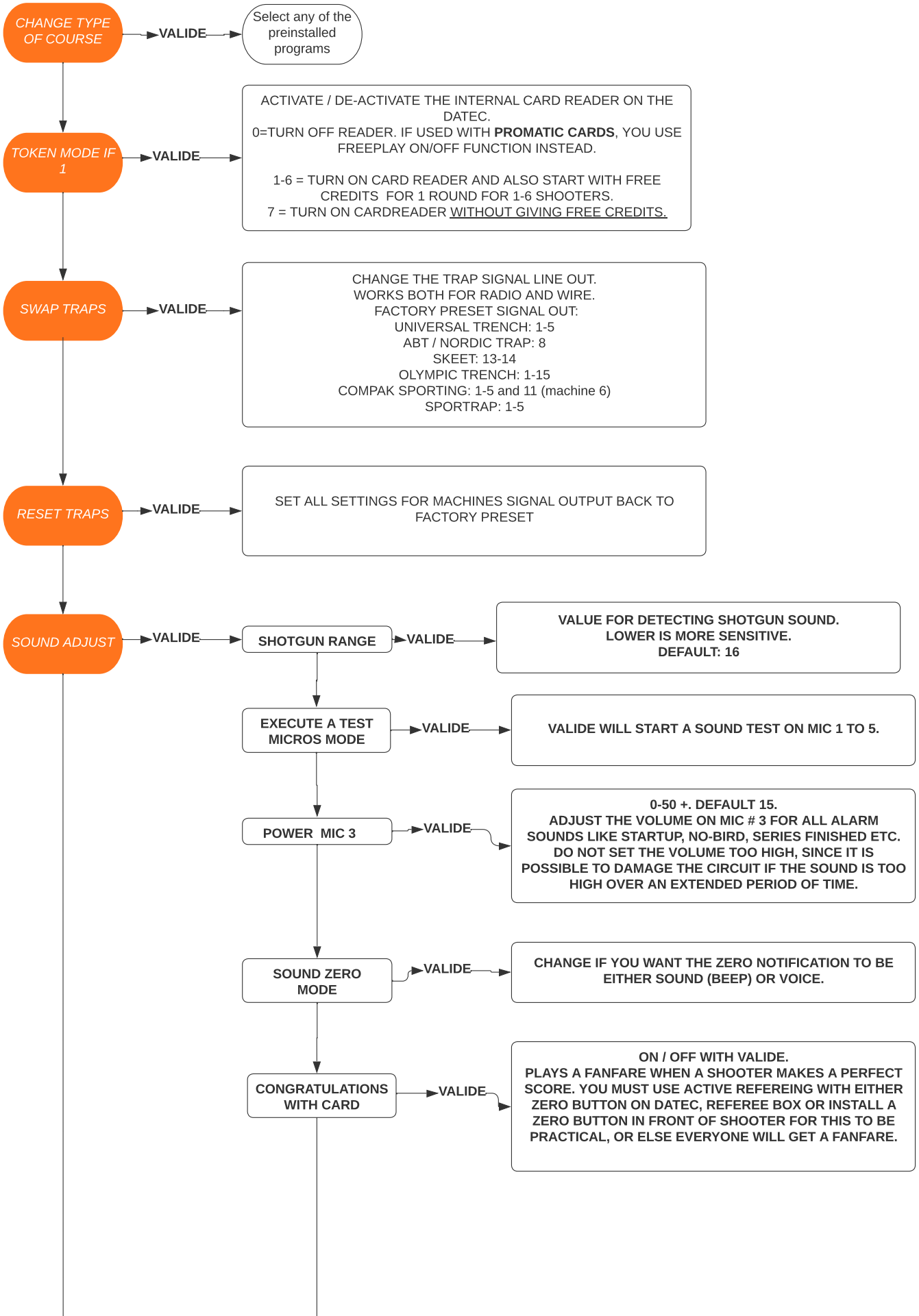
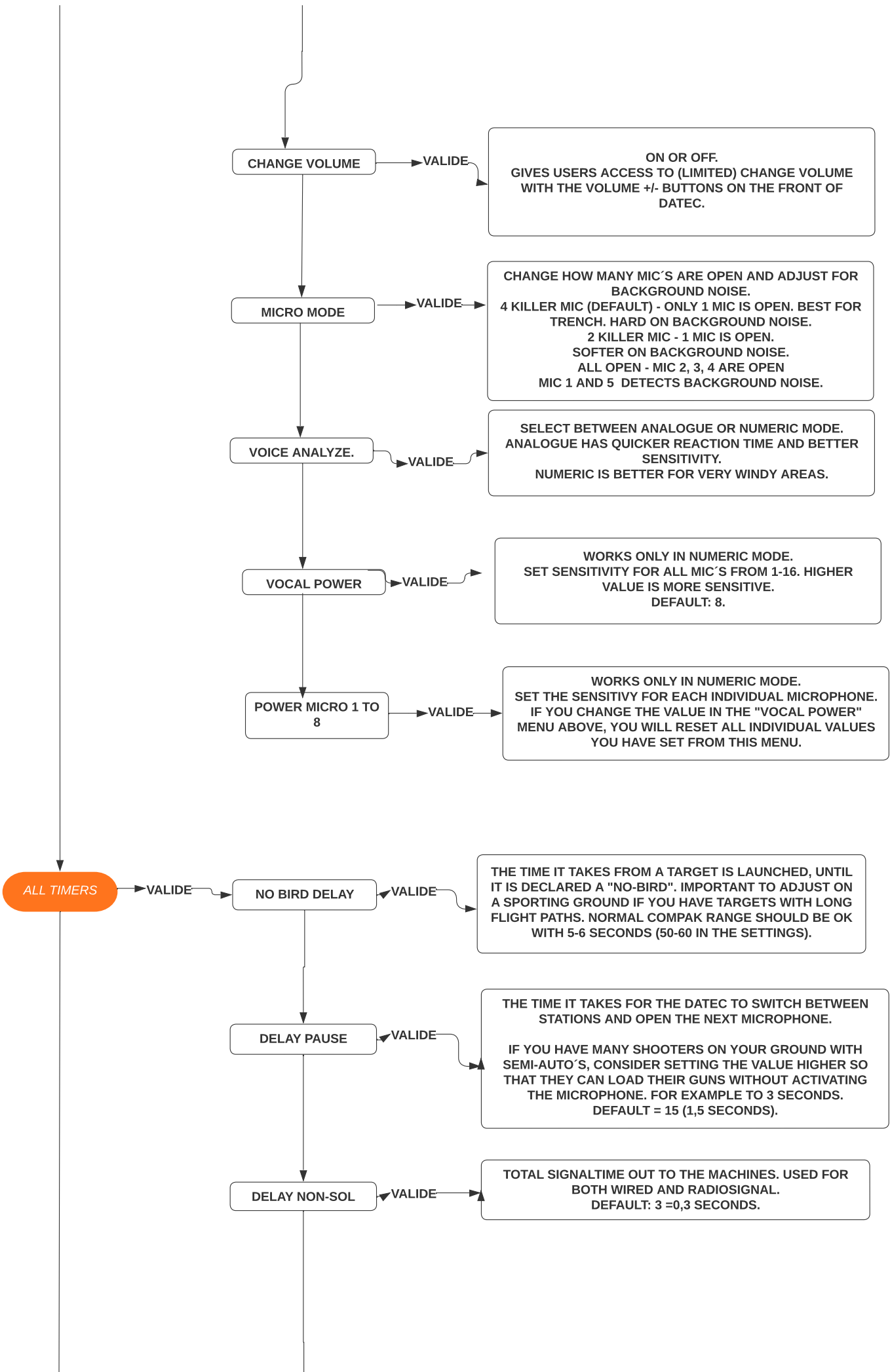


WiFi Datec Flowchart based on software version 0X82

©Per Magnus Pedersen | December 11 - 2025

PRESS "MENU"





DELAY STOP

VALIDE

HOW LONG TIME BEFORE THE SHOOTING SEQUENCE IS AUTOMATICALLY ENDED, IF THERE ARE NO ACTIVITY. IF YOU HAVE MACHINEPROBLEMS OR OTHER ISSUES CAUSING YOU TO STOP THE SHOOTING, IT IS IMPORTANT THAT YOU USE THE PAUSE SWITCH ON THE REFEREE CABLE TO STOP THIS TIMER. IF YOUR DELAY IS LONGER THAN THIS TIMER, THE DATEC WILL EITHER TAKE OUT SHOOTERS FROM THE LINE OR STOP THE WHOLE SHOOTING SEQUENCE (SQUADED).

DEFAULT 100 = 10 MINUTES

WAIT END SHOOT

VALIDE

IF YOU WANT THE DATEC TO PAUSE WHEN THE SERIES IS OVER (FOR SQUADED SHOOTING / COMPETITIONS) SO YOU CAN SEE THE RESULTS ON THE SCREEN. YOU VALIDATE THE SCORE WITH THE "VALIDE" BUTTON. IF YOU USE AN EXTERNAL TOKEN BOX, TURN THIS FUNCTION OFF.
DEFAULT: ON

FIRE DELAY

VALIDE

SETS THE MAX TIMER.
THIS WILL BE DIFFERENT FROM TRAP TO SKEET AND COMPAK.
FOR NORDIC TRAP AND SKEET IT IS VARIABLE.
FOR UT/OT/COMPAK IT IS FIXED.
SKEET=30
COMPAK=2
TRENCH=0

TIME END PO

VALIDE

SETS THE EXTRA TIME THE REFEREE IS GIVEN TO PRESS THE NO BIRD BUTTON (IF NEEDED) BEFORE STATION 5 IS FINISHED. THIS MIGHT BE NEEDED IF LAST BIRD WAS A NO BIRD BUT SHOOTER SHOTS ON THE CLAY. THIS IS IMPORTANT FOR LINE SHOOTING SINCE WHEN A SHOOTER ON STATION 5 EXITS, THERE IS NO WAY TO PUT THE SHOOTER BACK IN THE LINE.
DEFAULT = 5 (SECONDS)
IF YOU SET THIS TO 0, YOU TURN THIS AUTOMATIC FUNCTION OFF AND HAVE TO MANUALLY CONFIRM THE NEXT SHOOTER TO THE LINE WITH THE VALIDE BUTTON.

REPEAT DELAY

VALIDE

ONLY RELEVANT IF YOU SET TWO TARGETS FROM THE SAME MACHINE. SETS THE TIME BETWEEN THE TWO TARGETS.
DEFAULT: 30 = 3 SECONDS.

RADIO OPTIONS

VALIDE

RADIO SENDER

VALIDE

Turns the radio transmitter on/off. If the transmitter is turned off, the DATEC will only send signal via wire.

CHANGE RECEIVER

VALIDE

CHANGE RADIO CHANNEL BETWEEN 1-16

SECURITY RADIO

VALIDE

TURN RADIO CODING ON/OFF. MAKE THIS DECISION BEFORE INSTALLATION. IF YOU CHANGE SECURITY MODE AFTER INSTALLATION, YOU HAVE TO REPROGRAM ALL RECEIVERS. DEFAULT: ON

FO AND COMPAK

VALIDE

FOSSE OLYMPIQUE AND COMPAK MODE. SPECIAL MODE IF YOU HAVE A COMBINED OLYMPIC TRAP AND COMPAK RANGE. IF TURNED ON, DATEC WILL ONLY SEND SIGNAL VIA WIRE ON ALL TRENCH DISCIPLINES AND ONLY SEND SIGNAL VIA RADIO ON COMPAK AND SPORTING DISCIPLINES. WHEN YOU USE FOR COMPAK MODE, THE DATEC SWAP THE SIGNAL OUTPUT FROM LAUNCHER 11 TO 6 AUTOMATICALLY.

RADIO MODE

VALIDE

CHANGE BETWEEN JPB RADIO AND PROMATIC. PLEASE BE AWARE THAT YOU CAN NOT MIX RADIO SYSTEMS ON ONE LAYOUT. DATEC ONLY SUPPORTS PROMATIC STANDARD RADIO FORMAT.

IF YOU WANT TO USE RFX+ YOU NEED TO INSTALL A SEPARATE TRANSMITTERCARD FROM PROMATIC, CONNECT IT DIRECTLY TO THE TRAP OUTPUTS ON THE JUNCTION CARD AND TURN THE RADIO TRANSMITTER OFF.

PARAM CARDS

VALIDE

GROUND NUMBER

VALIDE

IS SET AUTOMATIC WHEN PRESENTED WITH A PROMATIC MANAGER CARD OR WITH A JPB GROUND CARD. THIS SETTING MUST NOT BE CHANGED.

SECURITY CODE

VALIDE

IS SET AUTOMATIC WHEN PRESENTED WITH A PROMATIC MANAGER CARD OR WITH A JPB GROUND CARD. THIS SETTING MUST NOT BE CHANGED.

TOKEN MODE IF 1 FOR ONE ROUND

VALIDE

NUMBER OF TOKENS/TARGETS THAT ARE DEDUCTED FROM A SHOOTERS CARD, IF YOU USE CARD SYSTEM. REMEMBER, THIS MUST BE CHANGED IF YOU SHOOT ANY OTHER PROGRAM THAT IS MORE /LESS THAN 25 TARGETS. DEFAULT = 25

INSERT CARD ONE
TIME / MANY TIMES

VALIDE

CHOOSE IF YOU WANT THE SHOOTERS TO BE ABLE TO USE THE SAME CARD MANY TIMES OR ONLY ONE TIME. IF ONLY ONE TIME, THE DATEC WILL NOT ACCEPT THE SHOOTERS CARD UNTIL HE IS FINISHED SHOOTING. IF YOU CHOOSE "MANY TIMES" THE SHOOTER CAN USE THE SAME CARD AS MANY TIMES HE WANTS. IN OTHER WORDS, ONE SHOOTER CAN USE HIS/HER CARD FOR OTHER SHOOTERS TOO OR A GROUP CAN SHARE 1 CARD.

BLACKLIST CARDS
MODE

VALIDE

VALIDE = ON / OFF
This function actively blacklists unauthorised cards. It must be implemented with the correct security settings in the clubhouse with new card loader system. Leave this function OFF unless you have been instructed form an authorised JPB system installer to leave it on.

SECURITY CARDS
MODE

VALIDE

VALIDE = ON / OFF
This function actively blacklists unauthorised cards. It must be implemented with the correct security settings in the clubhouse with new card loader system. Leave this function OFF unless you have been instructed form an authorised JPB system installer to leave it on.

CHANGE PARCOUR

VALIDE

THIS MENU ONLY WORKS IF YOU HAVE A CARD SYSTEM ACTIVE. IT GIVES THE SHOOTER THE OPTION TO SWAP BETWEEN (UP TO) 8 PRESET PROGRAMS SET BY THE GROUND MANAGER.
THE NUMBER DISPLAYED IS THE MEMORY POSITION OF THE SHOOTING PROGRAM YOU WANT TO INCLUDE.
FOR EXAMPLE 55 = FITASC COMPAK #40.

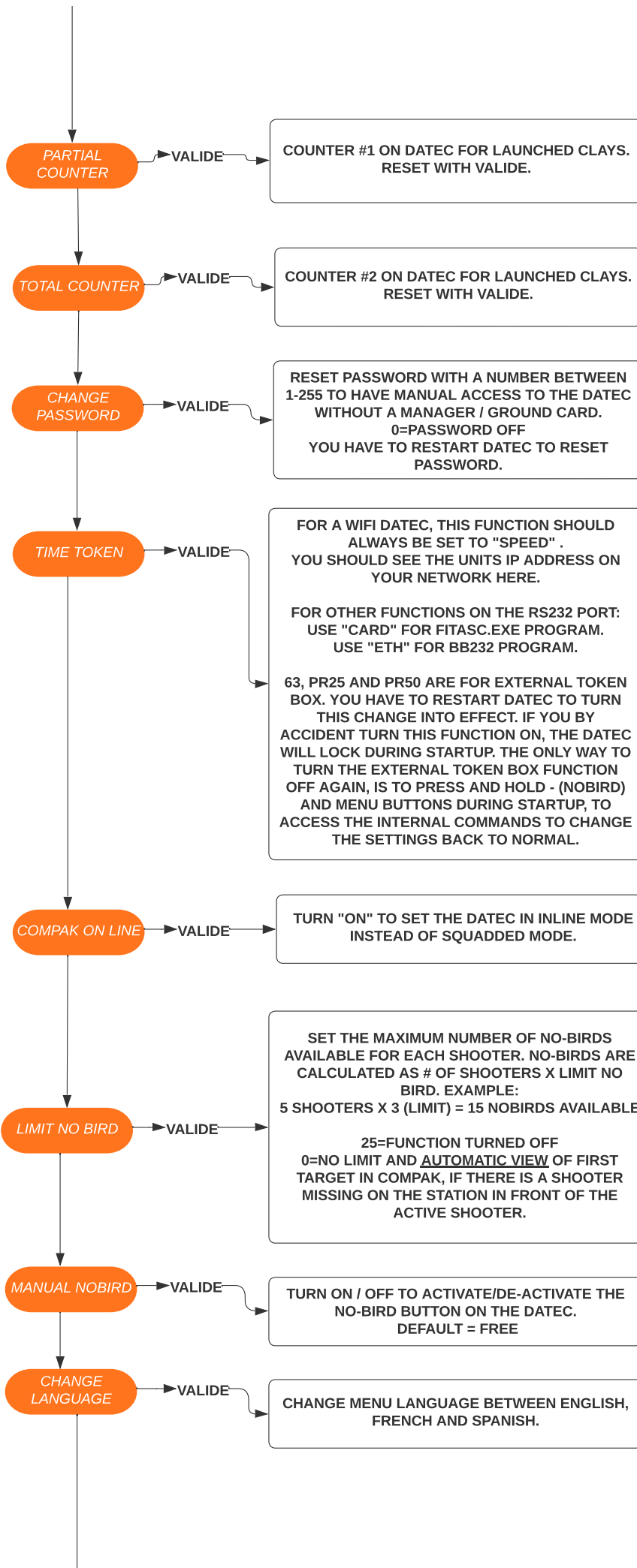
GO TO THE FIRST MENU "CHANGE PROGRAM" FIRST TO SEE WHICH PROGRAMS AND MEMORY POSITIONS YOU WANT TO INCLUDE. WRITE DOWN THE PROGRAMS MEMORY POSITION ON A NOTE SO YOU HAVE THIS IN FRONT OF YOU. AFTERWARDS, YOU GO BACK TO THIS MENU (CHANGE PARCOUR) TO SET UP TO 8 (A-H) PRESET POSITIONS. IF YOU SET A MEMORY POSITION TO 0, IT WILL NOT BE DISPLAYED TO THE SHOOTER.

WE RECOMMEND YOU START WITH THE HIGHEST NUMBER ON POSITION A AND LOWEST NUMBER ON POSTITION H. THIS IS BECAUSE THE DATEC SORTS THE LIST FROM H-A AND IT MAKES IT EASIER FOR THE SHOOTER TO SCROLL THROUGH THE LIST WHEN IT IS SORTED THIS WAY.

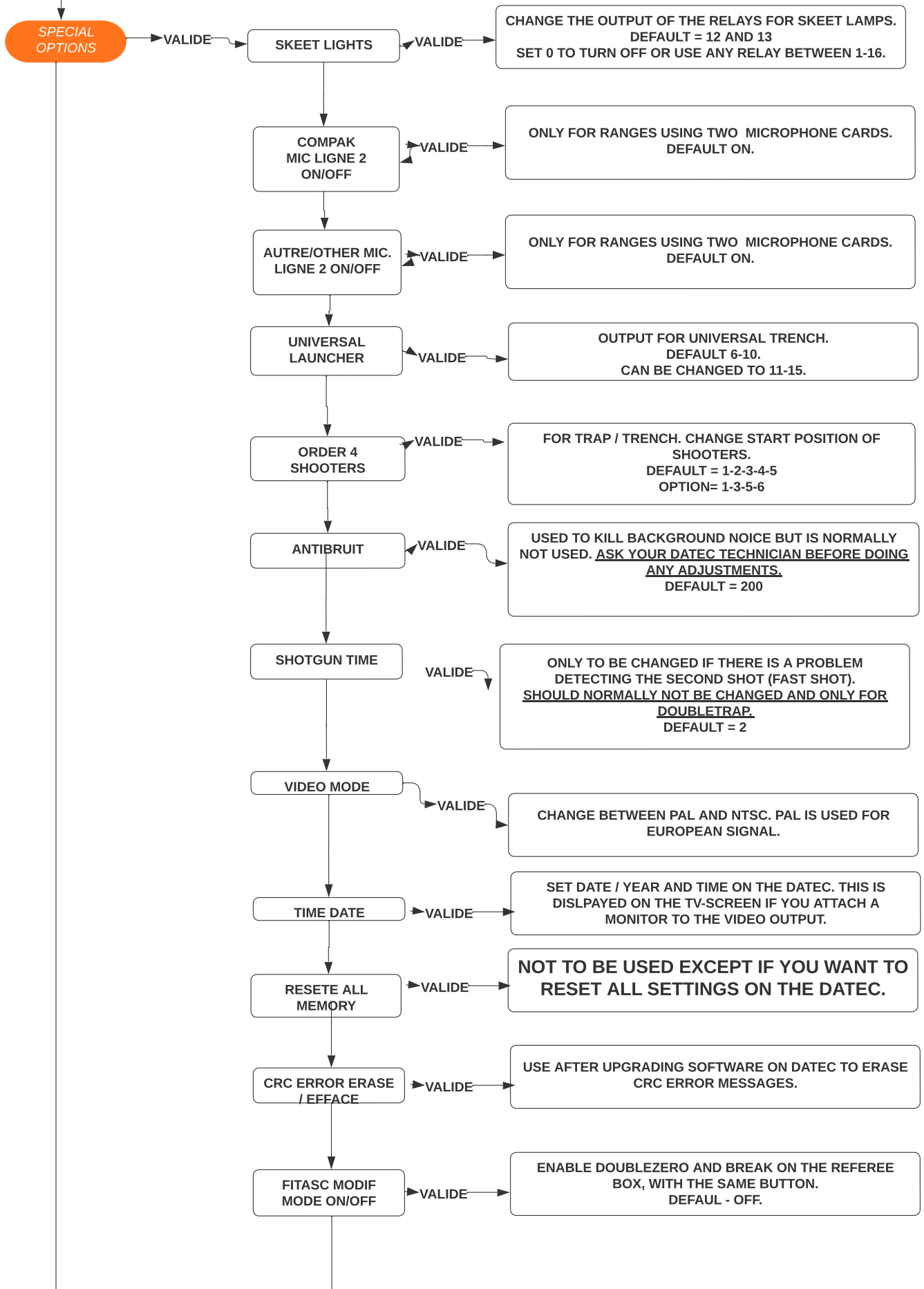
AVANCE

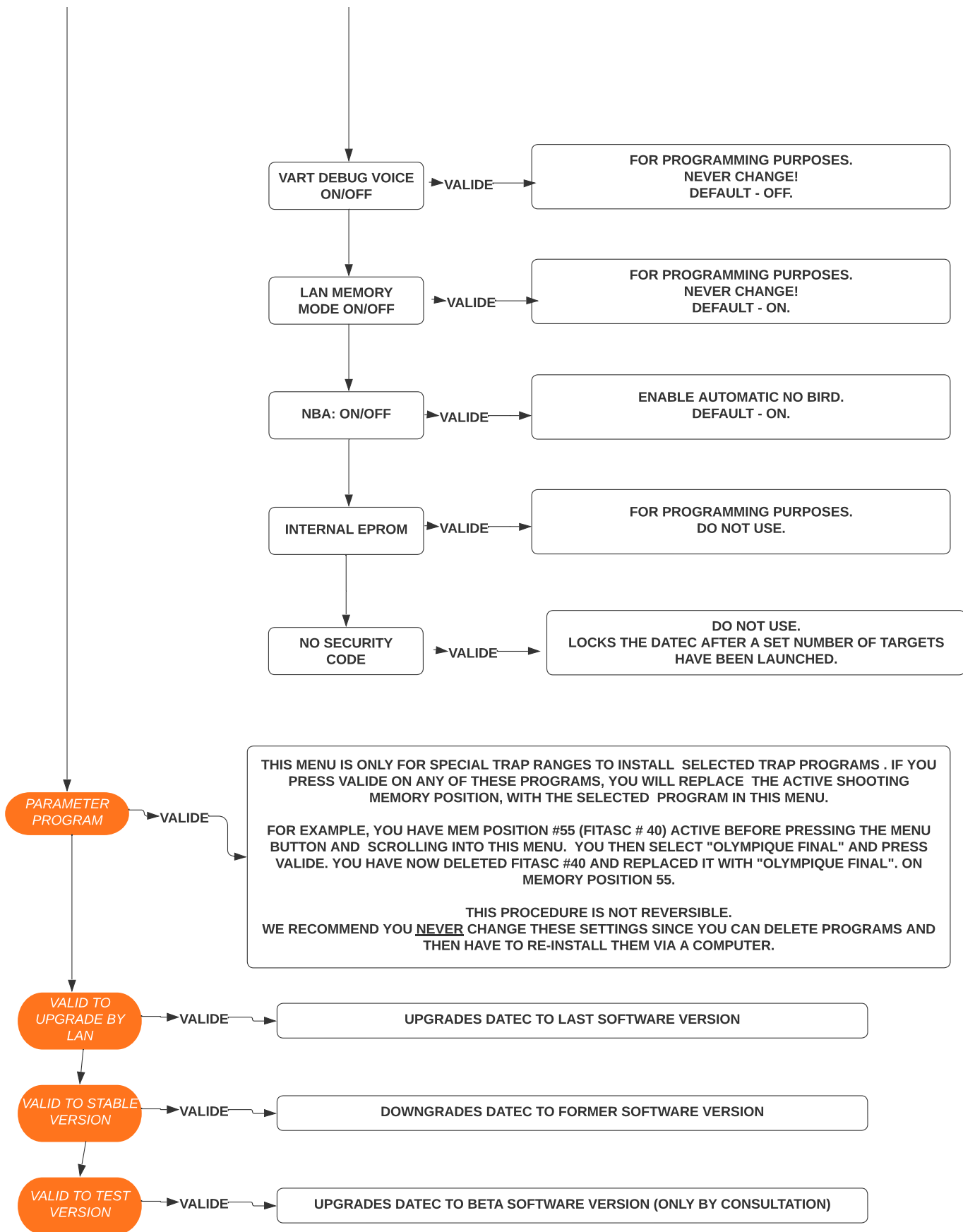
THIS MENU SETS WHICH MEMORY POSITION YOU WANT TO WITHDRAW THE CLAYS FROM, ON THE SHOOTERS CARD.
NORMALLY THIS IS NOT USED, BUT IF YOU WANT TO USE DIFFERENT PRICE SETTINGS FOR DIFFERENT SHOOTING DISCIPLINES, THIS IS THE MENU YOU USE TOGETHER WITH LOADING THE CLAYS IN THE CHOSEN MEMORY POSITION ON THE CARD LOADER.

JPB CARDS = 1-3
PROMATIC CARDS = 1-8
DEFAULT = 1



PLEASE ONLY CHANGE SETTINGS UNDER SPECIAL OPTIONS WHILE CONSULTING YOUR DATEC TECHNICIAN.





© Per Magnus Pedersen / Jæger og Hund AS
 Gamle Hallingdalsveien 105
 3534 Sokna
 + 47 93 24 97 29
 www.jegeroghund.no
 post@jegeroghund.no